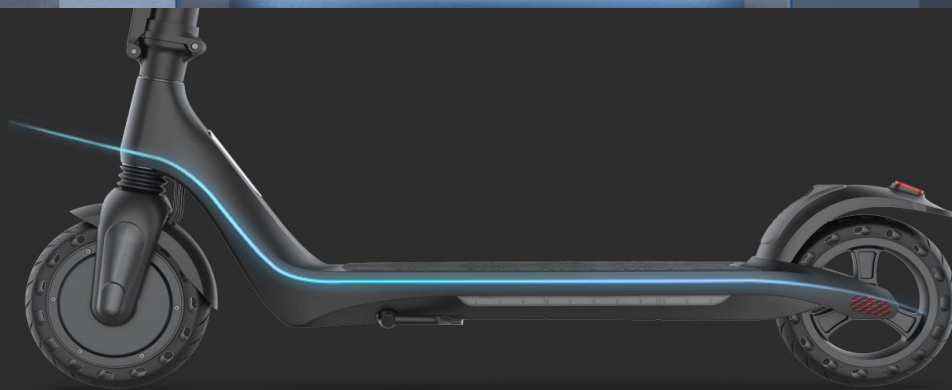


**We're OEM supplier of Lamborghini**  
**Welcome to cooperation**



**Official  
Supplier**



**Streamline**

Arc-shaped integrated minimalist design, streamlined lines, from the pedal to the height of the ground, consider every detail of the driver

## Beautiful Inside And Out

Smart App/LightingSystem/Extra Battery  
Integrated Moulding/Explosion Proof tire

**120**<sup>KG</sup> / **25**<sup>KM/h</sup> / **40**<sup>KM</sup>  
Max loading / Max speed / Max range



## External Battery Available

40km Long range, high-rate and high-power storage,  
safe and durable performance.



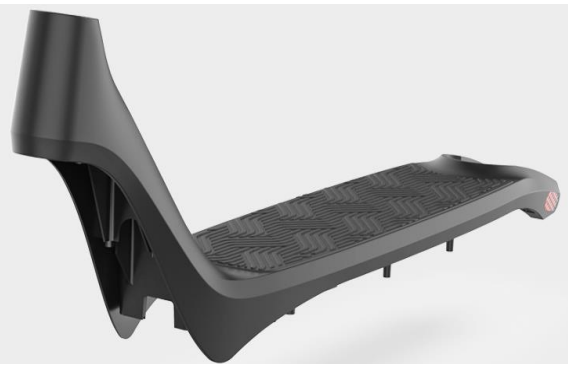
## 3 Steps Fast Folding

Three-step quick folding, using the folding structure concept of high-end  
folding bikes for easy storage and handling

## Integrated Moulding

The integrated body design adopts the magnesium-aluminum alloy integrated die-casting process, which not only ensures the integrity of the appearance and the overall firmness of the body.

**Magnesium Material Frame  
Strong & Light weight**



## Curve Tube

Curved pole design, the curvature has been adjusted dozens of times, the lines are smooth, and it is integrated into the designer's minimalist aesthetic concept, as elegant as a swan neck.



**Official  
Supplier**



## Non-slip Handle

Comfortable grip, increased friction.

## Press Accelerator

Push-type rebound throttle, accelerate with a slight press, free control of riding speed.

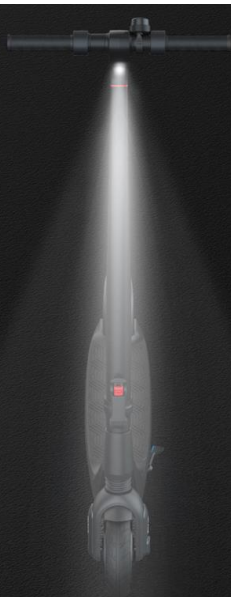
## LCD Display

Riding status at a glance

## Sidelights

Side ambient lights will shimmer like a stream, enriching your riding entertainment





## Headlight

Ultra light front light, escort for you at night, with a range of up to 10m.



## Tail light

The ultra light taillight, warning the rear pedestrians and vehicles by pressing the brakes to flash differently



## Invisible Suspension



## Explosion Proof Tire Rear Foot Brake

8 Inches solid tires, explosion and abrasion proof, durable. Press rear fender, stable brake.

# Specification

MECHANICAL		PERFORMANCE	
Wheel Size	8 Inch	Max Speed	25KM/H Limited
Net Weight	12Kg	Speed Options	6-15-25 KM/H
Frame Material	Magnesium Alloy	Range	20-25Km
Tires	Honeycomb tire		35-40Km with extra battery
IP Rating	IPX5	Max Climb	12 Degrees
Dimensions	108x53x116 MM	Payload	120Kg

BATTERY		SAFETY	
Internal Battery	36V 7.8Ah Lithium	Lights	Head light / Tail light / LED Side lights
External Battery (Optional)	36V 5.2Ah Lithium	Brakes	Electronic brake + Mechanical brake
BMS	Over-heating, Short circuit, Over-current, Over-charger protection	Motor Cutoff	Electrical signal from brake lever cuts power to motor
Removable External Battery	Optional	Shock Absorbtion	Front Shock Absorbtion + Honeycomb Tires

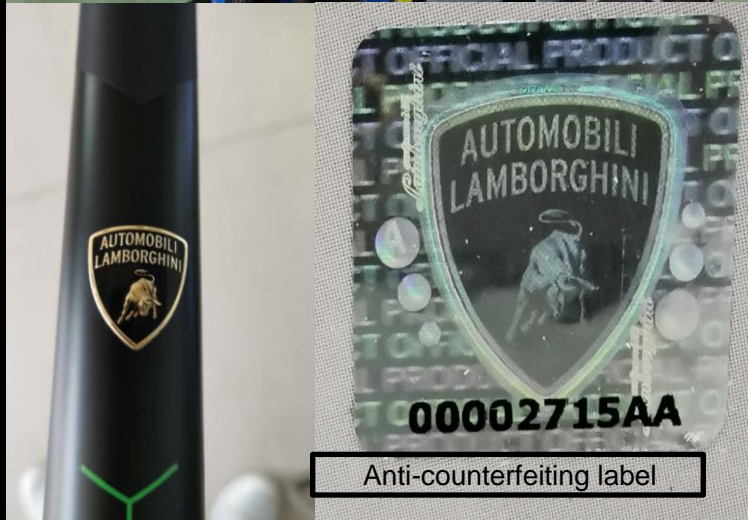
CHARGER		MOTOR	
Input Voltage	100-200V AC 50/60Hz	Rated Power	350W
Output Voltage	42V	Max Torque	15.43N.m
Charging Time	3-4h	Drive mode	Front Drive

## FEATURES

- LED lights:** LED front/tail Lights and Lights under the platform for driving in complete safety particularly during the night
- Smart display:** Display integrated in the handlebar with the necessary indications for complete control
- Frame material:** The magnesium frame gives maximum lightness and usability
- Speed:** ECO: <= 6km/h | D:<= 20km/h | S: <= 25km/h (max speed)
- Suspension:** Combined with the front suspension the road bumps are optimally damped
- Brakes:** Dual brake: E-brake and Mechanical brake
- Power engine:** 350W brushless motor, technology with minimal maintenance, with different noiseless speed levels
- Tyre:** Full and comfortable Honeycomb tyres, without any risk of puncture
- APP:** Users will have the opportunity to monitor the usage data of the vehicle, set the cruise parameters and adjust the lights directly from your smartphone.
- Max load:** 120kg / Max Climb: 15°
- Safety information:** 16-50 year age /130-200cm height max, recommended use with helmet and protection.
- Working Temperture:** -10°C / 45°C
- Level of protection:** IPX5
- Charging time:** about 3/5 hours



# Official Supplier of Lamborghini eScooter



Anti-counterfeiting label



## R1 Electric Scooter



### Contact us



@fitrider.cn



@FitRiderScooter



@FitriderFactory



Youtube

环球资源  
global sources

Email: [info@fitrider.cn](mailto:info@fitrider.cn) [sales@fitriderscooter.com](mailto:sales@fitriderscooter.com)

Whatsapp / Wechat : (0086) 18657188760

[WWW.FITRIDER.CN](http://WWW.FITRIDER.CN)